

## SKYBEAM – MULTIPLE FUNCTIONS IN A CAPTIVATING DESIGN

[□ back to the  
overview](#)

date 15.03.2017  
rubric products

It is a fact that people spend 90% of their time indoors, e.g. in offices. This is why a healthy indoor climate in workplace environments is critical. It is one way of ensuring that people feel comfortable enough to perform well. In other words, designing offices in such a way that productivity and comfort are not compromised is increasingly important. Air-water systems are an excellent choice to ensure good indoor air. Using water as operating fluid, they can transfer high amounts of heating or cooling energy more efficiently than all-air systems, and they require less space.

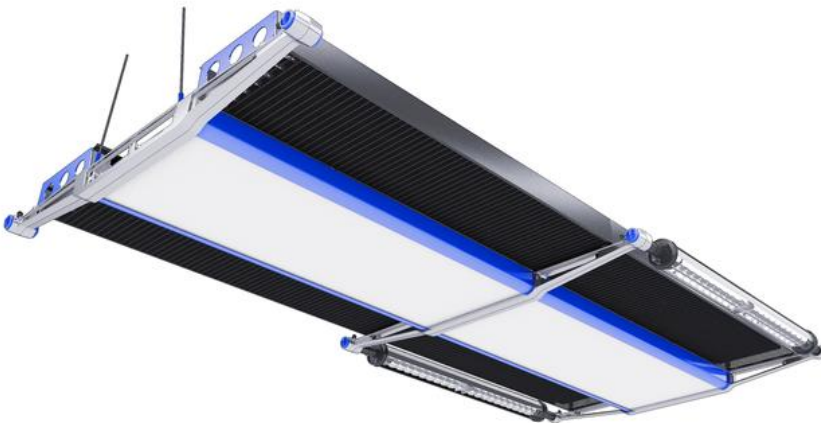
*'The system produces an elegant lightweight skyscape which is a celebration of its highly crafted and legible components. It represents the considered design synthesis of technical performance, adaptability and appearance.'*

*Simon Tonks, Senior Associate, Rogers Stirk Harbour + Partners*

SKYBEAM is a sophisticated air-water system of an innovative design, where every functional detail is represented by an aesthetic solution. The unusual modular structure – a platform based on a chassis – not only minimises installation work, but also provides utmost flexibility with regard to design, lighting and function. While SKYBEAM perfectly fulfils its primary functions, i.e. cooling or heating, it also features improved acoustic properties and can be fitted with different luminaires and additional services such as smoke detectors or PIR sensors. And it can be retrofitted with a fresh air spigot at a later stage. This wide range of functional details plus individual choices of colour give architects and specialist consultants unique freedom of design.

SKYBEAM does not require a suspended ceiling. Pipes, wires and other technical parts are nicely concealed by an acoustically optimised central cover plate, which also accommodates additional services. The 1.50 m long base chassis can be expanded with any number of modules and is accordingly suitable also for the refurbishment or retrofitting of existing buildings. SKYBEAM can reduce operating costs, or provide increased performance at the same level of energy consumption.

SKYBEAM has been specifically developed for the International Quarter London project a major development by international project management and construction specialists, Lendlease. The team that has delivered this innovative next generation product to Lendlease includes London architects Rogers Stirk Harbour + Partners, M&E technical consultants, Hoare Lea and TROX. 'As workplace design strips back the traditional suspended ceiling, increasing daylight and additional height to an office layout, SKYBEAM is designed to coordinate all of those previously hidden services into a well organised, adaptable element that gives rhythm to any exposed soffit,' says Ivan Harbour, Senior Partner with Rogers Stirk Harbour + Partners.



”

Visit TROX at ISH (hall 11.0, booth B51) to see these and many other innovations. More information and technical details of the systems and products shown can be found at [www.trox.de/PR\\_ISH2017](http://www.trox.de/PR_ISH2017)

Download [Press Release](#)

Download [Photograph 1](#)

Download [Photograph 2](#)

Download [Photograph 3](#)

---

TROX is leading in the development, manufacture and sale of components, units and systems for the ventilation and air conditioning of rooms. With 27 subsidiary companies in 27 countries on 5 continents, 14 production facilities, and importers and representatives, TROX is present in over 70 countries. Founded in 1951, global market leader TROX, whose international head office is in Germany, generated in 2016 with a total of 3,770 employees around the globe revenues of approximately € 500 million.

For further information or should you have any questions about TROX, please contact:

Christine Roßkothen  
Corporate Marketing  
Voice: +49 (0) 2845 202464  
Fax: +49 (0) 2845 202587  
[c.rosskothen@trox.de](mailto:c.rosskothen@trox.de)  
[www.troxtechnik.com](http://www.troxtechnik.com)