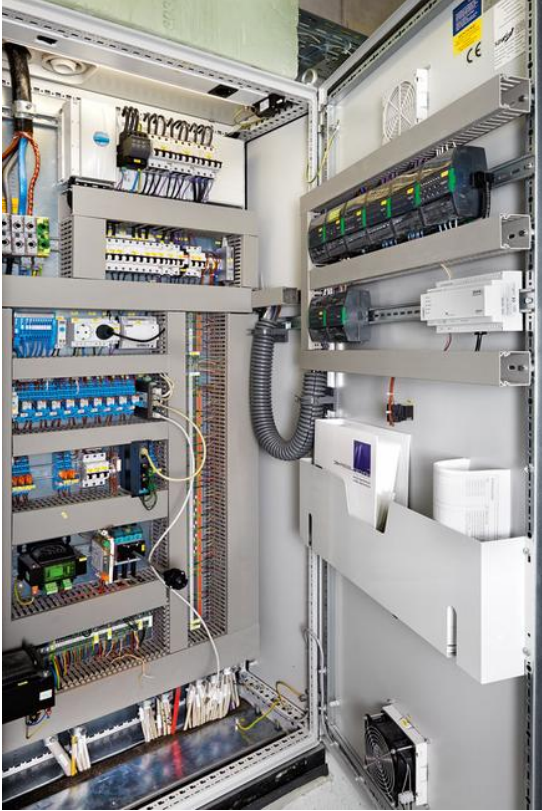


## AIR MANAGEMENT



Not only does the TROX X-CUBE provide retail spaces reliably with a continuous supply of treated fresh air, the unit has now been enhanced with an added intelligent function.

### **TROX X-CUBE: Central air handling unit for efficient room air management.**

The air handling unit can act as the centre of the automation network within the air conditioning system and can also serve as a management system for smaller buildings. X-CUBE Control determines, collects and evaluates all data for the air conditioning system with regard to its functions and their optimisation. The number of communication interfaces and data points on an existing central BMS can thus be drastically reduced, just like the installation and commissioning effort. Innovative air management systems with intelligent control components ensure the safe communication of the ventilation and air conditioning components. This makes the design of the ventilation system as part of building automation much easier and enables efficient, demand-based operation. Standard protocols are used for the integration with the central BMS.

### **X-AIRCONTROL.**

X-AIRCONTROL is a system of master modules and zone modules used to control the ventilation and air conditioning in single rooms or in different parts of a building (zones). An X-AIRCONTROL master module can control up to 125 zone modules, and if an X-CUBE unit with integral controls is used, that X-CUBE Control system can assume the function of a master module.

## TROX AIR MANAGEMENT SYSTEM

- Room management function: For the first time, all room-related data and configurations are stored on one controller.

- BMS interfaces: LON, BACnet, Modbus, IP-based webserver
- Stand-alone room control using an AIRCONTROL zone module together with a control panel
- Easy maintenance, room diagnosis and room configuration
- Rapid and precise control to maintain setpoint values
- Modular hardware