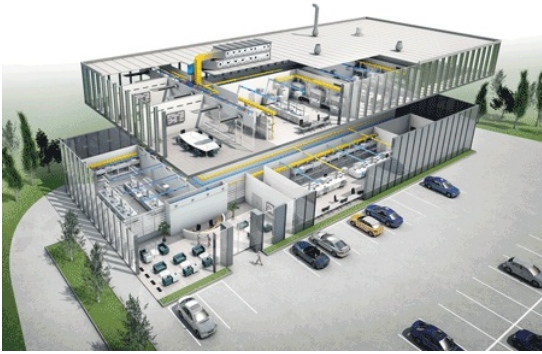


BIM



It has become a buzzword at home and abroad – Building Information Modeling, or BIM. But what exactly is it?

Interdisciplinary building design and construction, computer-aided, and with all trades working on the same data model: This is what BIM is about. As early as in the project phase, a digital model of the building is created. All relevant data for the design, construction and management of an object are included and made available to all parties involved.

It is hence possible to simulate the entire lifecycle of an object before construction starts. Schedules and costs can be calculated much more precisely than with traditional planning or design procedures.

And indeed, in many countries BIM is already mandatory for public sector projects. The fact that BIM allows for assessing time frames and costs at an early stage is for more and more building owners reason enough to also make BIM mandatory for the awarding of contracts, particularly for large projects.

Yet multiple and diverse software environments and the lack of international standards still pose a challenge to designers, engineers and HVAC contractors. Help is here, though: The TROX Easy Product Finder design programme provides extensive product data for components and systems. What is more, both our website and the building services design software of leading providers allow you to access many TROX products



IM-
ATA

X-BIM CAD BROWSER