

FIRE AND SMOKE PROTECTION

Product selection A-Z

Filter list



Available
online



Configure
now

A	JZ-RS	TNC-70413	TNC-DP
AS-EM	K	TNC-70581	TNC-EC-AZM
AS-EM/C	KA-EU	TNC-A003S	TNC-EC-GP
AS-EM/EK02	KU-K30	TNC-A005S	TNC-EC-Z00-Z03
AS-EM/SIL2	L	TNC-A1145	TNC-SVC0*DP*
AS-EP	LON-WA1/B2	TNC-A1256	TNC-SVC0*DPR*
E	LON-WA1/B2-AD	TNC-A1258	TNC-SVC0*MB*
EK-JZ	LON-WA1/B2-AD230	TNC-A1305	TNC-SVC0*MBR*
EK2-EU	LON-WA1/FT3	TNC-A1306	TNC-SVR01/TNC-SVR02
F	LON-WA4/B	TNC-A1353	TNC-Z0045
FK-EU	M	TNC-A1354	TNC-Z0047
FK2-EU	MB-BAC-WA1/4	TNC-A1375	TNC-Z0094
FKR-EU	R	TNC-A2225	TNC-Z0119
FKRS-EU	RM-O-3-D	TNC-A4000	TNC-ZB0252
FKT-EU	RM-O-VS-D	TNC-D1020	TP043N
FV-EU	T	TNC-D2011	TP057N
J	TNC-70067	TNC-D2012	TP104N
JF	TNC-70113	TNC-D2013	TP121N

EK-JZ SMOKE CONTROL DAMPER: UNIVERSAL. MODULAR. SAFE.

Smoke control dampers with the largest possible openings are required to keep escape and



rescue routes smoke-free.

This is the only way to achieve large volume flow rates at low airflow velocities – a prerequisite for the effective functioning of pressure differential systems (DBA).

[Go to EK-JZ product page: configure and order online](#)

TESTED AND CERTIFIED SAFETY

Every person should be able to feel safe in the knowledge that the building they are entering or using and underground transport systems will not put them in danger or become a trap. For this reason, fire can never really be completely ruled out, not least due to human error.

The correct preventative measures and components can help to eliminate this risk and restrict the damage caused by fire. Fire safety components and systems help to minimise the risk of fire and prevent fire and smoke from spreading.

CE MARKING OF TROX FIRE DAMPERS



TROX fire dampers carry the CE marking in compliance with EN 15650. The CE marking ensures that TROX fire dampers can be used for all approved applications across the EU.

With the TROX Declaration of Performance and the operating and installation manual customers are given a complete documentation package which ensures that TROX fire dampers can be used safely.

Since the Construction Products Regulation (CPR) became effective on 1 July 2013, Declarations of Performance have replaced the previously used approval certificates or declarations of conformity.

By providing the Declarations of Performance, TROX, as a manufacturer, ensures that its products conform to the data given in these documents.

CONSTRUCTION PRODUCTS REGULATION

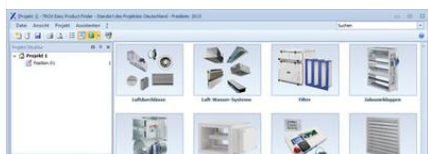
The Construction Products Regulation aims at harmonizing the technical specifications for construction products. The TROX feature article "New Harmony for European Markets" explains what is special about the new regulation and uses examples to explain the most important facts and names.

ARCHIV APPROVAL, CERTIFICATE

TROX SERVICES



PRODUCTSEARCH A-Z
Find out quickly and simply.



TROX EASY PRODUCT FINDER
Fast. Reliable. Innovative.



TOUR DE COMPETENCE
Competence - exciting staged.