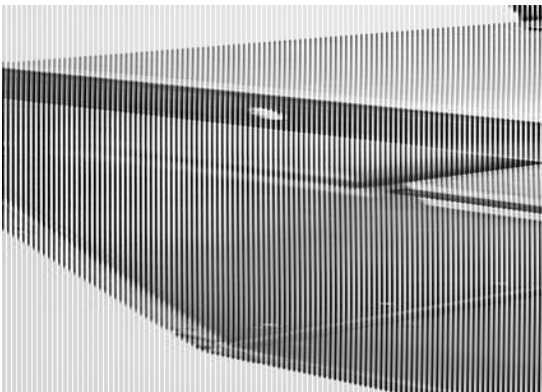


# FIRE DAMPERS

## PROMAT– CORRECT INSTALLATIONS OF FIRE DAMPERS

### FK-EU - NEW APPLICATIONS FOR THE CLASSIC, TRIED-AND-TESTED SOLUTION!



### CE-CERTIFIED FIRE PROTECTION SOLUTIONS FOR THE WHOLE OF EUROPE

The rectangular FK-EU-type fire dampers are used for the isolation of duct penetrations between fire compartments; they come in many different sizes and construction variants for a variety of installation situations. Certified for years, they guarantee maximum security in a wide range of buildings.

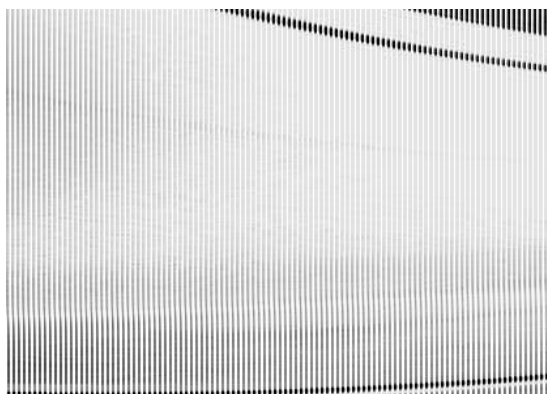
What is new is that the FK-EU has just been tested and approved for several new applications, for instance:

- Timber Frames
- Wooden beam ceilings

- Reduced distance to ceilings and floors

[Read more.](#)

## FKRS-EU FIRE DAMPER FROM TROX - A PROBLEM SOLVER IN SMALL SPACES



### INCREASED SAFETY, NEW APPLICATIONS.

Small but powerful!

A problem solver in small spaces: We've had the FKRS-EU tested successfully remote from walls and ceilings on ducts with cladding on two, three or four sides. A space saving solution.

A marvel of versatility: The small circular FKRS-EU has been approved (EIO90S) for timber stud, timber frame and half-timbered walls and for each type of installation: dry, wet or with a fire batt.

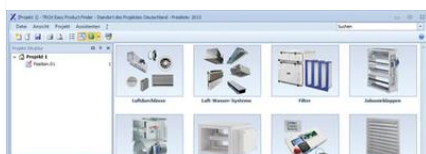
A smart little damper: FKRS-EU fire dampers are ideal for wooden beam ceilings in new builds as well as in refurbishment projects. It's as simple and smart as this: The part of the fire damper which is above the ceiling is cast in a piece of concrete such that a small solid ceiling slab is created around the damper. Done!

[Read more.](#)

## TROX SERVICES



**PRODUCTSEARCH A-Z**  
Find out quickly and simply.



**TROX EASY PRODUCT FINDER**  
Fast. Reliable. Innovative.



**TOUR DE COMPETENCE**  
Competence - exciting staged.