



ADJUSTMENT DEVICES

FOR SERVICE AND COMMISSIONING

Adjustment devices for the service and commissioning of VAV terminal units. To display current values and parameters and for functional testing.

- Display of actual and setpoint values
- Display and changing of parameters and operating modes
- Simple connection to the service socket of the controller or to a terminal in the switch cabinet
- Easy operation
- Portable devices for use on site

General information



Application

- Adjustment devices for VAV terminal units, used to facilitate service and commissioning
- Read actual values and setpoint values
- Read and change parameters
- Read and set operating modes
- Functional test
- Setting of communication parameters for bus-compatible control components

Parts and characteristics

- Adjustment device
- Connecting cable

Commissioning

- To operate the adjustment device, the voltage is typically supplied from the control components
- Certain models also enable battery operation

TECHNICAL INFORMATION

Order code



AT-VAV
|
1

-

B
|
2

1 Type

AT-VAV Adjustment devices for VAV terminal units

2 Variants

B ZTH-EU for TROX/Belimo volume flow controllers

G GUIV2-A for TROX/Gruner volume flow controllers

G3 GUIV3-M for volume flow controller TROX TVE

S AST20 for Siemens volume flow controllers

Order example: AT-VAV-S

Variants



Adjustment device ZTH for product variant AT-VAV-B



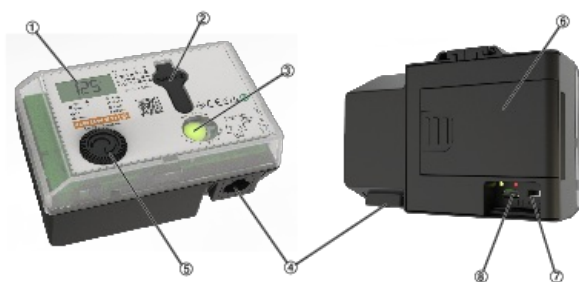
- ① Display
- ② OK – confirm selected value
- ③ Push button – increase value
- ④ Push button – decrease value
- ⑤ ESC – cancel / back
- ⑥ i – display additional information
- ⑦ USB socket for PC communication
- ⑧ MP connecting socket for controller communication with ZK1-GEN, ZK2-GEN

Adjustment device GUIV2-A for product variant AT-VAV-G



- ① Display
- ② +/- push buttons
- ③ Set (acknowledge)
- ④ Escape (cancel)
- ⑤ Menu selection
- ⑥ Indicator lights
- ⑦ Connection for personal computer (mini USB)
- ⑧ Connection for controller

Adjustment device GUV3-M (only TVE) for product variant AT-VAV-G3



- ① Display
- ② Connection socket service
- ③ Status LED button
- ④ RJ45 plug for connection to the controller
- ⑤ Control element Rotary selector switch
- ⑥ Battery
- ⑦ ON/OFF switch
- ⑧ Micro-USB port

Adjustment device AST20 for product variant AT-VAV-S



- ① Display
- ② Left and right operating buttons beside the display. Individual assignment depending on dialogue, illustrated via the assignment display
- ③ Connecting cable with 3-pin plug connector for the adjustment of supplied/optional connecting cables

