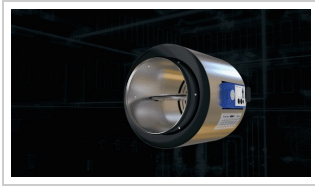


## CONTROL UNITS

### VAV TERMINAL UNIT TYPE TVE



#### A NEW CONCEPT OF VOLUME FLOW RATE MEASUREMENT

VAV terminal units of Type TVE apply a completely new measuring principle as the volume flow rate is measured not with a probe or sensor, but by means of the damper blade itself.

This innovative design allows for a reduction in length and helps to ensure precise measurement results even in case of unfavourable upstream conditions; with dynamic measurement, this is independent of the airflow direction. **A great advantage if space is limited.**

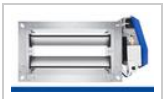
#### SHORT, PRECISE AND VERY VARIABLE

- Works perfectly even with unfavourable upstream conditions
- The relation between damper blade position and differential pressure is stored as a characteristic relationship in the controller
- Higher measurement accuracy even with lower airflow velocities
- Choice of static or dynamic transducer
- Available with Easy controller, Compact controller or Modbus variant for connection to the central BMS
- Airflow direction is not critical if dynamic measurement is used
- Release button on control component allows for easy replacement of the component

#### TECHNICAL SPECIFICATION

- Circular
- Diameter 100, 125, 160, 200, 250 mm  
Other sizes up to 630 mm are being developed

### UNIVERSAL CONTROLLER / TROX HIGH PRECISION DRIVE HPD



## CLEAN ROOM CONTROL BECOMES EASIER, MORE ACCURATE AND MORE STRAIGHTFORWARD

Clean rooms are special insofar as it is extremely important to maintain setpoint values in order to meet GMP (Good Manufacturing Practice) requirements. The TROX UNIVERSAL controller has been developed for volume flow rate and pressure measurement in critical environments.

Commissioning is simple. The controller captures actual values and allows for the transmission of data to higher-level systems without any loss of information. Use the integral web server on the controller and the TROX EasyCon app on your smartphone.

If the controller is used together with a High Precision Drive (HPD), which has a digital interface, the positioning accuracy of the damper blade is five times higher than with a conventional setup.

### TROX UNIVERSAL CONTROLLER – FROM COMPLEX TO SIMPLE

- Proven EASYLAB hardware for room and duct pressure control
- Bluetooth adapter connects to the TROX EasyCon app and allows for operation via smartphone
- Software with commissioning wizard eliminates operating errors
- Clear overview of all relevant system values
- Easy connection to central BMS

### TROX HIGH PRECISION DRIVE HPD

- Precise volume flow rate and pressure control, 0.1° positioning accuracy
- Improved monitoring functions because of digital communication between controller and actuator
- Brushless fast-running actuator (approx. 3 s for 90°), low wear and tear