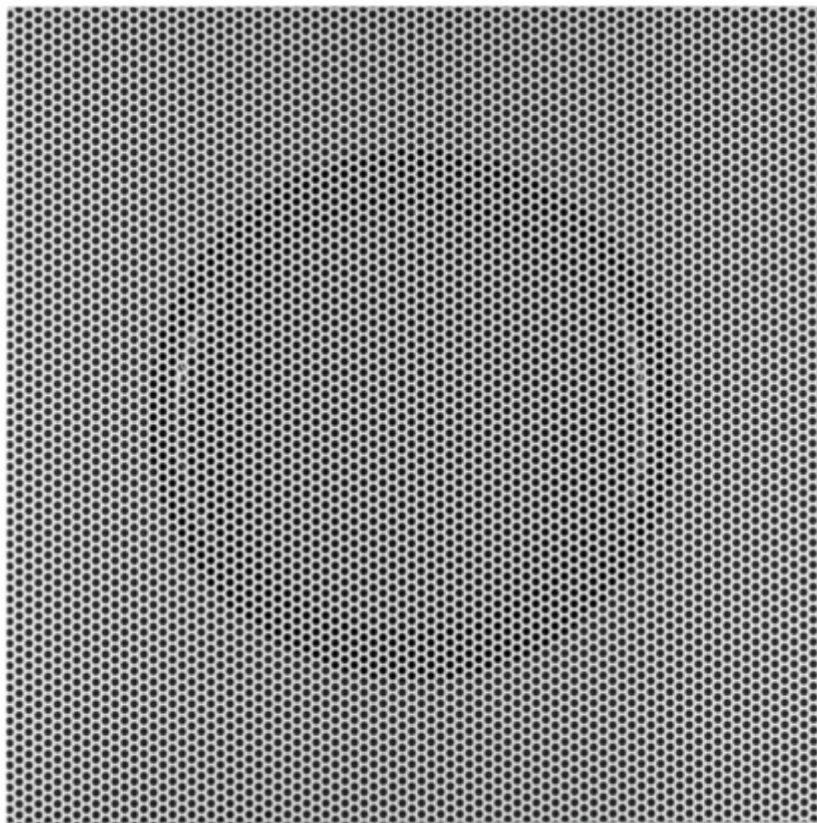


## Type DCS



### FOR HORIZONTAL SWIRLING SUPPLY AIR DISCHARGE CREATING HIGH INDUCTION LEVELS WITH FIXED AIR CONTROL BLADES

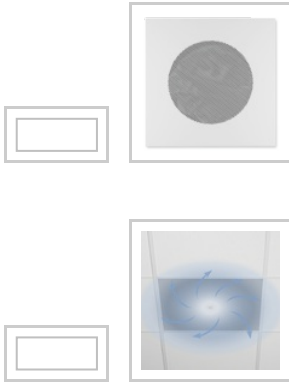
Square ceiling swirl diffusers with perforated face plate, for comfort and industrial zones

- Nominal sizes 600, 625
- Volume flow rate range 4 – 260 l/s or 16 – 936 m<sup>3</sup>/h
- Perforated diffuser face made of galvanised sheet steel, powder-coated
- For supply and extract air
- For variable and constant volume flows
- For all types of ceiling systems, particularly for T-bar ceilings
- Swirl unit inside, 6 sizes, for the best swirl effect and high induction levels
- Ideal for comfort zones

Optional equipment and accessories

- Exposed diffuser face available in RAL CLASSIC colours
- Horizontal or vertical duct connection

- Plenum box with lining



### Application

- Type DCS ceiling swirl diffusers are preferably used as supply air diffusers for comfort and industrial zones
- Perfect integration with suspended perforated sheet metal ceilings
- Horizontal swirling supply air discharge for mixed flow ventilation
- The efficient swirl creates high induction levels, thereby rapidly reducing the temperature difference and airflow velocity (supply air variant)
- For variable and constant volume flows
- For supply air to room air temperature differences  $-12$  to  $+10$  K
- For room heights up to 4 m (lower edge of suspended ceiling)
- For T-bar ceilings

### Special characteristics

- Horizontal air discharge creating high induction levels
- Design variants with perforated square or circular diffuser face style
- For T-bar ceilings
- Horizontal or vertical duct connection

### Nominal sizes

- Diffuser face: 593, 598, 618, 623
- Swirl diffuser: 125, 160, 200, 250, 315, 400

### Variants

- DCS-P: Perforated diffuser face
- DCS-N: Unperforated diffuser face
- DCS-C: Diffuser face with exposed discharge nozzle

### Installation type

- V: Exposed T-bars
- H: Concealed T-bars

### Connection

- K: Vertical duct connection, with duct collar
- US: Vertical duct connection, with transition piece
- A: Horizontal duct connection, with plenum box
- AK: Horizontal duct connection, with plenum box and lining

### Parts and characteristics

- Square diffuser face
- V: For T-bar ceilings with exposed T-bars
- H: For T-bar ceilings with concealed T-bars
- Swirl unit with radially arranged fixed air control blades

#### Construction features

- Spigot suitable for circular ducts to EN 1506 or EN 13180

#### Materials and surfaces

- Diffuser face, discharge nozzle, swirl unit, duct collar and plenum box made of galvanised sheet steel
- Transition piece made of aluminium
- Plenum box lining is mineral wool
- Swirl unit and discharge nozzle dip coated RAL 9005, jet black
- Diffuser face and discharge nozzle powder-coated RAL 9010, pure white
- P1: Powder-coated, RAL CLASSIC colour

#### Mineral wool

- To EN 13501, fire rating class A1, non-combustible
- RAL quality mark RAL-GZ 388
- Biosoluble and hence hygienically safe according to the German TRGS 905 (Technical Rules for Hazardous Substances) and EU directive 97/69/EC
- Faced with glass fibre fabric as a protection against erosion through airflow velocities of up to 20 m/s
- Inert to fungal and bacterial growth

#### Standards and guidelines

- Sound power level of the air-regenerated noise measured according to EN ISO 5135

#### Maintenance

- Maintenance-free as construction and materials are not subject to wear
- Inspection and cleaning to VDI 6022

## TECHNICAL INFORMATION

Function, Technical data, Quick sizing, Specification text, Order code

---

Variants, Dimensions and weight, Product details

---

## TROX GmbH

---



Heinrich-Trox-Platz  
D-47504 Neukirchen-Vluyn  
Tel.: +49 (0)2845 202-0  
Fax: +49 (0)2845 202-265

## Online-Services

---

- › Order-Status (My TROX NET)

---

- › TROX Academy

---

- › Catalogue Download

---

- › Your contact partner

---

- › Online fault report

---

- › BIM

---

## Service-Hotlines

---

Sales Germany  
and technical consulting  
+49 (0)2845 202-0  
[Contact](#)

Technical service  
+49 (0)2845 202-400  
[Contact](#)